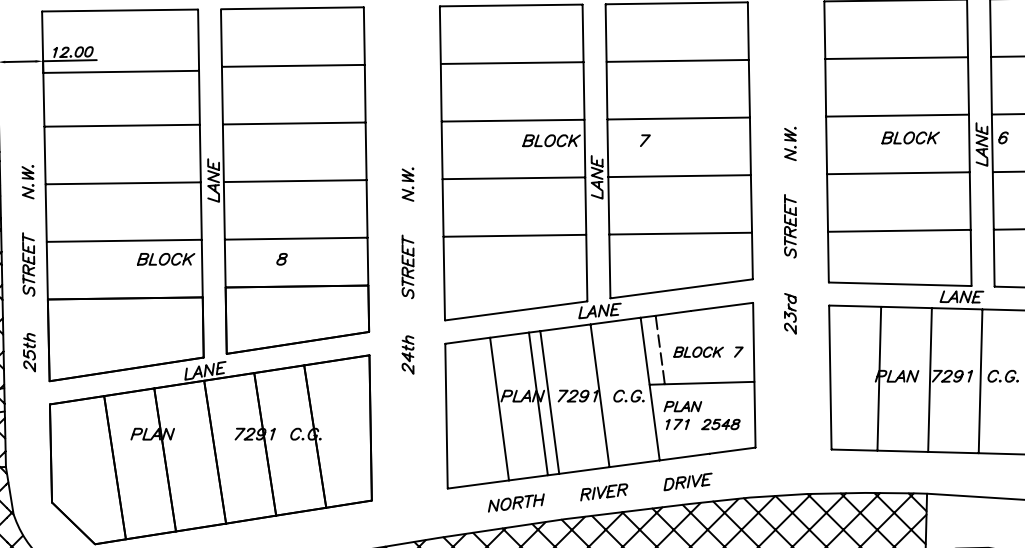


NORTH DINOSAUR DRIVE

1st AVENUE N.W.



ABANDONED RAILWAY

PLAN 2085 J.K.
PLAN RY 428

MIDLAND DISTRICT

DRUMHELLER, ALBERTA

PLAN SHOWING PROPOSED ROAD CLOSURES AFFECTING PARTS OF STREET CREATED BY PLAN 7291 C.G (NOW NORTH RIVER DRIVE) AND 25th STREET CREATED BY PLAN 811 0811 AND ALL OF STREET CREATED BY PLAN 811 0811 ALL WITHIN THE S.E.1/4 & W.1/2 SEC.9, TWP.29, RGE.20, W.4M.

—SCALE= 1:2000 — JUNE, 2022 —

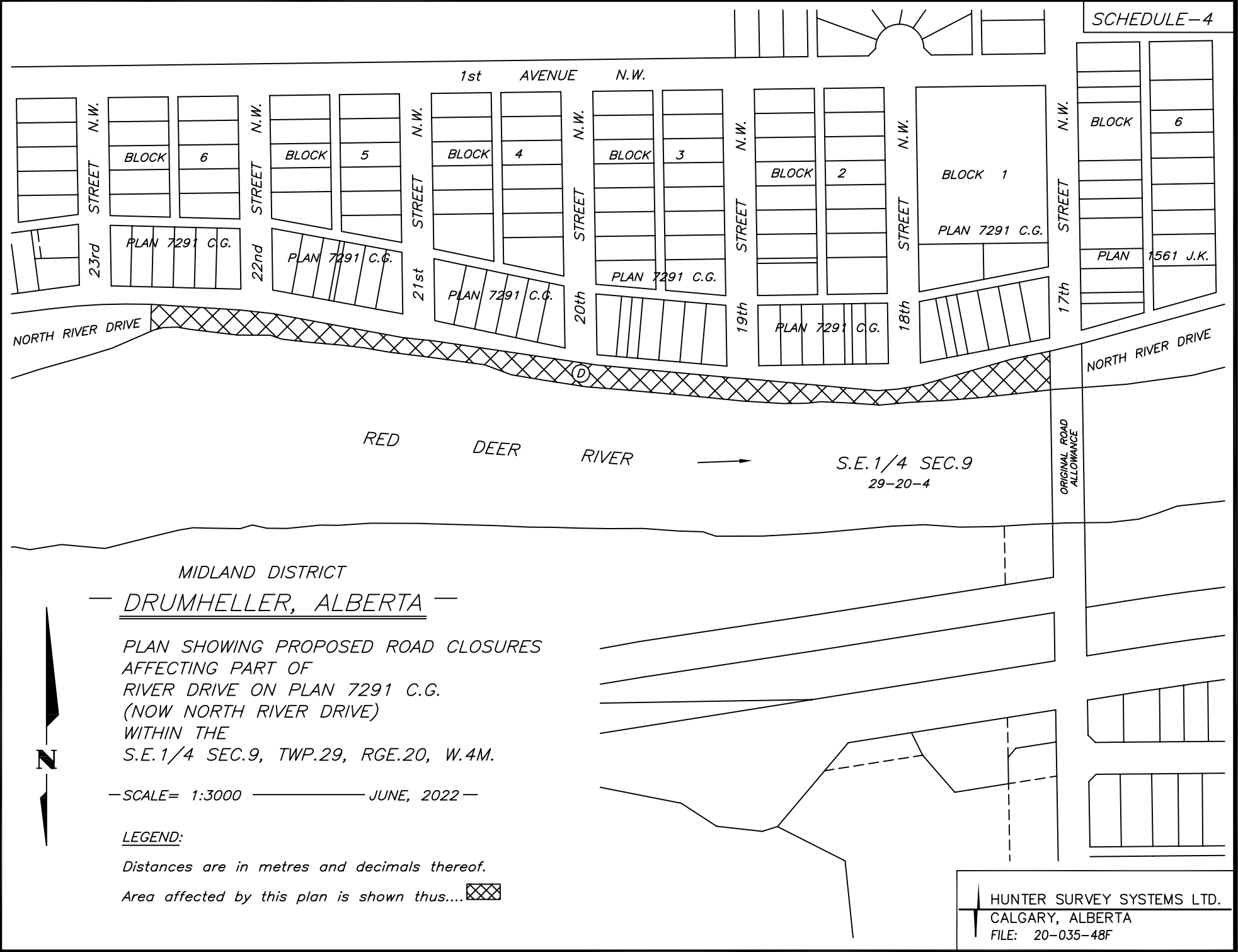
LEGEND:

Distances are in metres and decimals thereof.

Area affected by this plan is shown thus... 

RED DEER RIVER

HUNTER SURVEY SYSTEMS LTD.
CALGARY, ALBERTA
FILE: 20-035-48D



NORTH RIVER DRIVE

RED DEER RIVER

S.E. 1/4 SEC. 9
29-20-4

ORIGINAL ROAD ALLOWANCE

MIDLAND DISTRICT


DRUMHELLER, ALBERTA

PLAN SHOWING PROPOSED ROAD CLOSURES
 AFFECTING PART OF
 RIVER DRIVE ON PLAN 7291 C.G.
 (NOW NORTH RIVER DRIVE)
 WITHIN THE
 S.E. 1/4 SEC. 9, TWP. 29, RGE. 20, W. 4M.

—SCALE= 1:3000 — JUNE, 2022 —

LEGEND:

Distances are in metres and decimals thereof.

Area affected by this plan is shown thus... 

HUNTER SURVEY SYSTEMS LTD.
 CALGARY, ALBERTA
 FILE: 20-035-48F

MIDLAND DISTRICT
— DRUMHELLER, ALBERTA —

PLAN SHOWING PROPOSED ROAD CLOSURES
AFFECTING PART OF
RIVER DRIVE ON PLAN 1561 J.K.
(NOW NORTH RIVER DRIVE) AND
PART OF ORIGINAL ROAD ALLOWANCE BETWEEN
S.E.1/4 SEC.9 AND S.W.1/4 SEC.10
ALL WITHIN THE S.E.1/4 SEC.9 AND THE
S.W.1/4 SEC.10, TWP.29, RGE.20, W.4M.

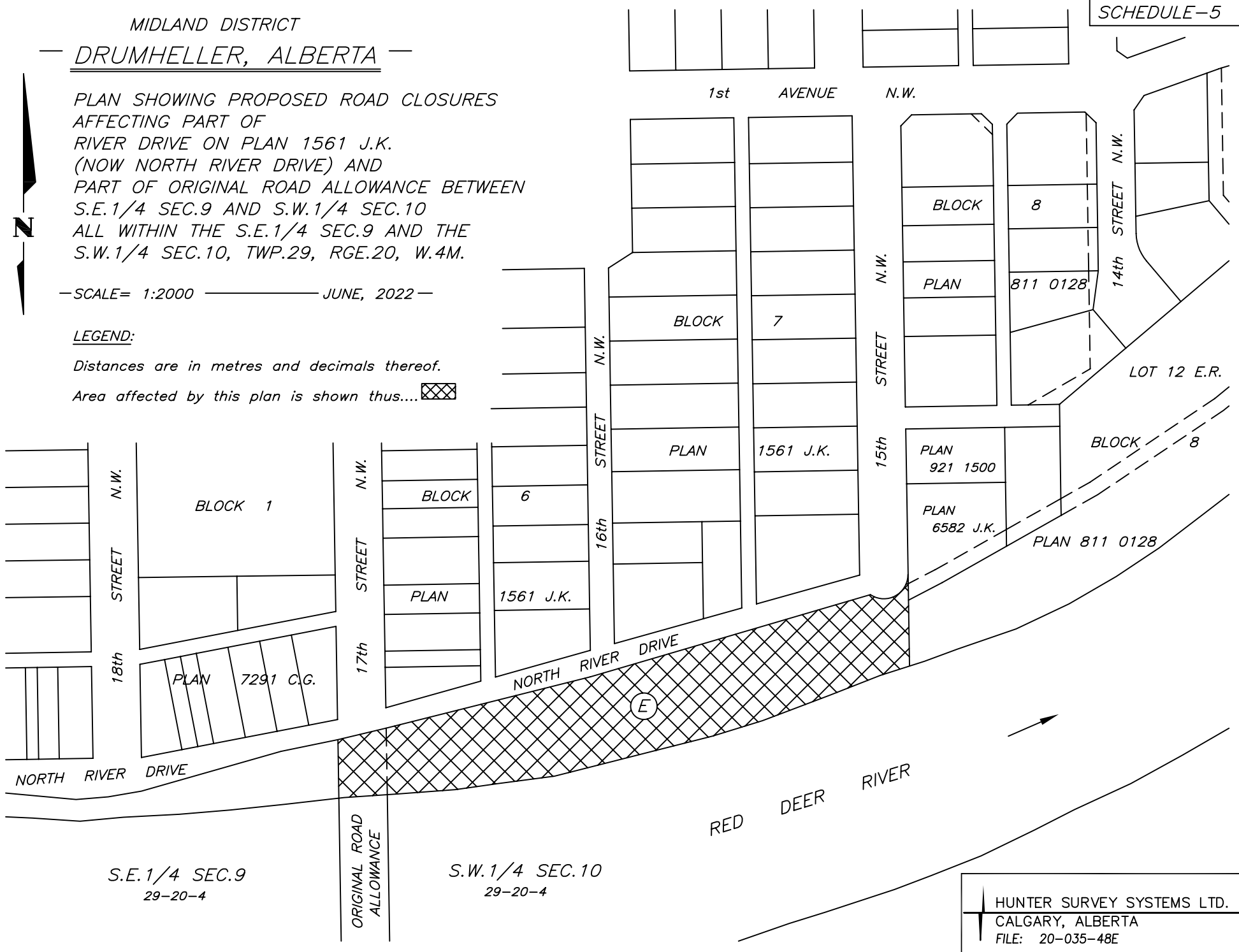


—SCALE= 1:2000 ————— JUNE, 2022 —

LEGEND:

Distances are in metres and decimals thereof.

Area affected by this plan is shown thus... 



S.E.1/4 SEC.9
29-20-4

S.W.1/4 SEC.10
29-20-4

HUNTER SURVEY SYSTEMS LTD.
CALGARY, ALBERTA
FILE: 20-035-48E