

**PROJECT**  
**DRUMHELLER**  
**DOWNTOWN PLAZA**  
 FOR  
 MUNICIPALITY OF DRUMHELLER



SEALS



ISSUED FOR: PCO #01 WASHROOM UTILITIES  
 DATE: 2022-05-26

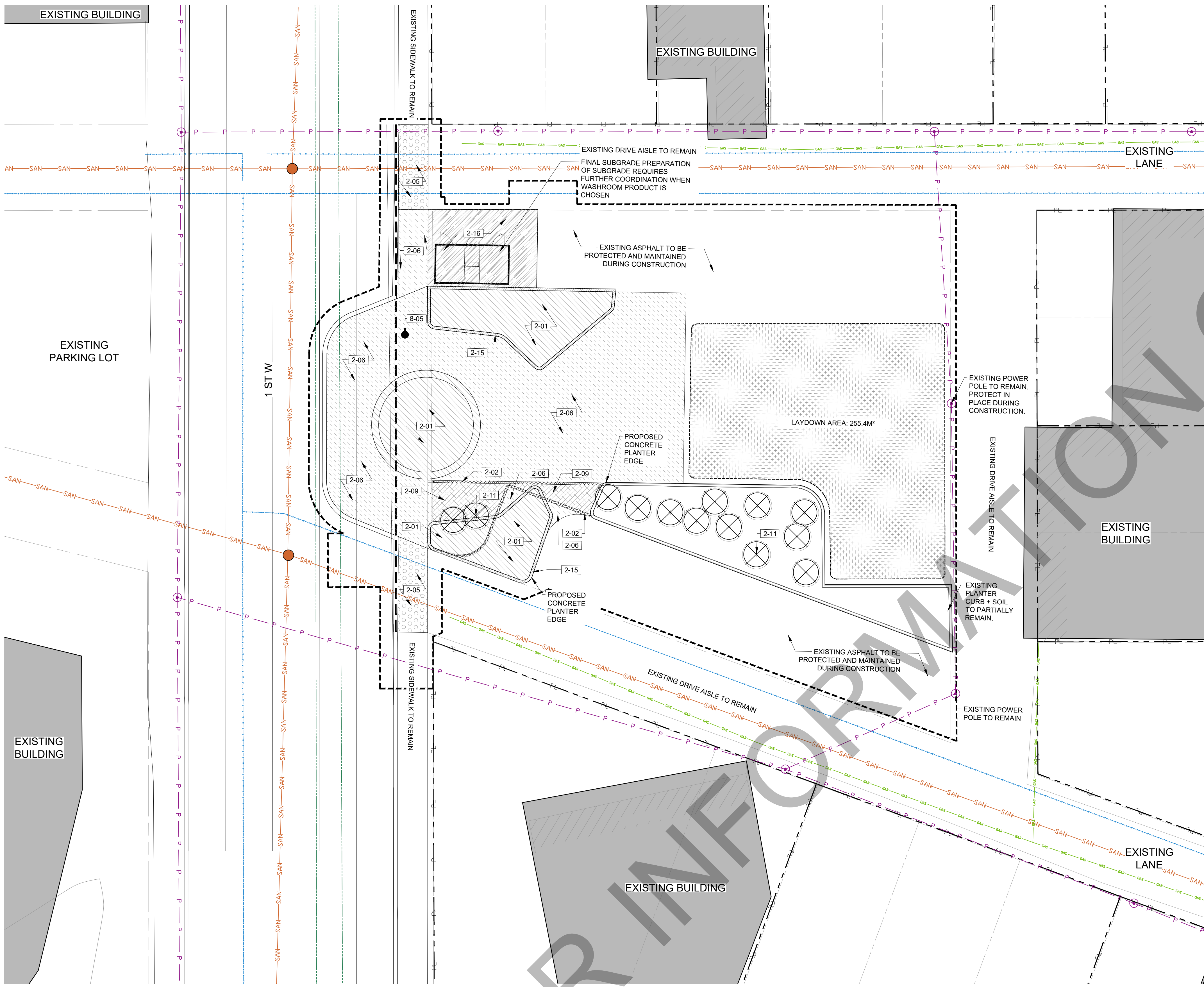
REVISIONS:	NO.	DESCRIPTION.	DATE.	BY.
	5	ISSUED FOR PCO #1	2022-05-26	
	4	ISSUED FOR CONSTRUCTION	2022-05-06	
	3	ISSUED LANDSCAPE ADDENDUM #3	2022-03-09	
	2	ISSUED LANDSCAPE ADDENDUM #1	2022-02-18	
	1	ISSUED FOR TENDER	2022-02-15	

DESIGNED BY: ZW/MW  
 PLOT DATE: 2022-05-03  
 DRAWING FILE NAME:  
 LD-100 DEMO PLAN.dwg

**DRAWING TITLE:**  
**DEMO PLAN**

**DEMOLITION & RELOCATIONS LEGEND**

SYMBOL	1 GENERAL CONDITIONS DESCRIPTION	QTY
[Symbol]	1-01 CONSTRUCTION LAYDOWN AREA.	255.4 m <sup>2</sup>
SYMBOL	2 SELECTIVE DEMOLITION & RELOCATIONS DESCRIPTION	QTY
[Symbol]	2-01 REMOVE EXISTING SURFACE AND/OR EXCAVATE TO 600MM ± DEPTH.	117.9 m <sup>2</sup>
[Symbol]	2-02 REMOVE EXISTING CONCRETE CURB - PLANTER.	26.7 m
[Symbol]	2-03 REMOVE EXISTING CONCRETE CURB AND GUTTER - ROAD.	35.8 m
[Symbol]	2-05 REMOVE EXISTING CONCRETE PAVING TO 480MM ± DEPTH FOR HEAVY DUTY CONCRETE PAVING.	26 m <sup>2</sup>
[Symbol]	2-06 REMOVE EXISTING ASPHALT PAVING TO 380MM ± DEPTH REQUIRED FOR PEDESTRIAN PAVERS. REFER TO LM-100.	278.9 m <sup>2</sup>
[Symbol]	2-09 REMOVE EXISTING PLANTING AND PLANTING SOIL TO 450MM± DEPTH FOR PEDESTRIAN PAVERS. REFER TO LM-100.	18.4 m <sup>2</sup>
[Symbol]	2-11 EXISTING SHRUB TO BE REMOVED.	12
[Symbol]	2-15 REMOVE EXISTING ASPHALT PAVING TO 300MM ± DEPTH REQUIRED FOR CONCRETE PLANTER CURB. REFER TO LM-100.	11.4 m <sup>2</sup>
[Symbol]	2-16 REMOVE EXISTING ASPHALT TO 450MM FOR LIGHT DUTY PEDESTRIAN CONCRETE PAVING	42.3 m <sup>2</sup>
SYMBOL	8 ELECTRICAL DESCRIPTION	QTY
[Symbol]	8-05 EXISTING LAMP TO BE REMOVED BY ATCO. CONTRACTOR TO COORDINATE TIMING.	1

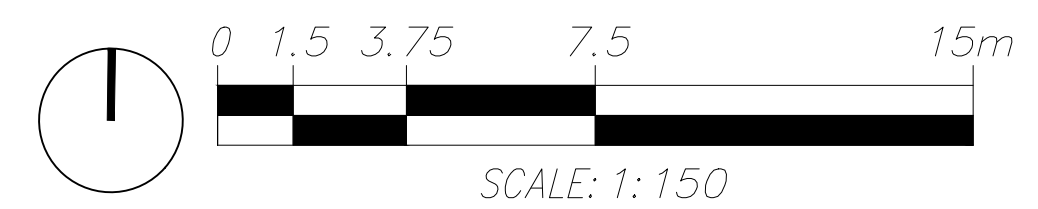


**GENERAL LEGEND**

- LIMIT OF WORK
- - - - - PROPERTY LINE

**UTILITIES LEGEND**

- ⊙ EXISTING POWER POLE
- EXISTING STREET LAMP
- P - EXISTING OVERHEAD POWER LINE
- ==== EXISTING CURB
- EXISTING STORM SEWER
- SAN - EXISTING SANITARY LINE
- W - EXISTING WATER LINE
- GAS - EXISTING GAS LINE



**LD-100**

EXISTING BUILDING

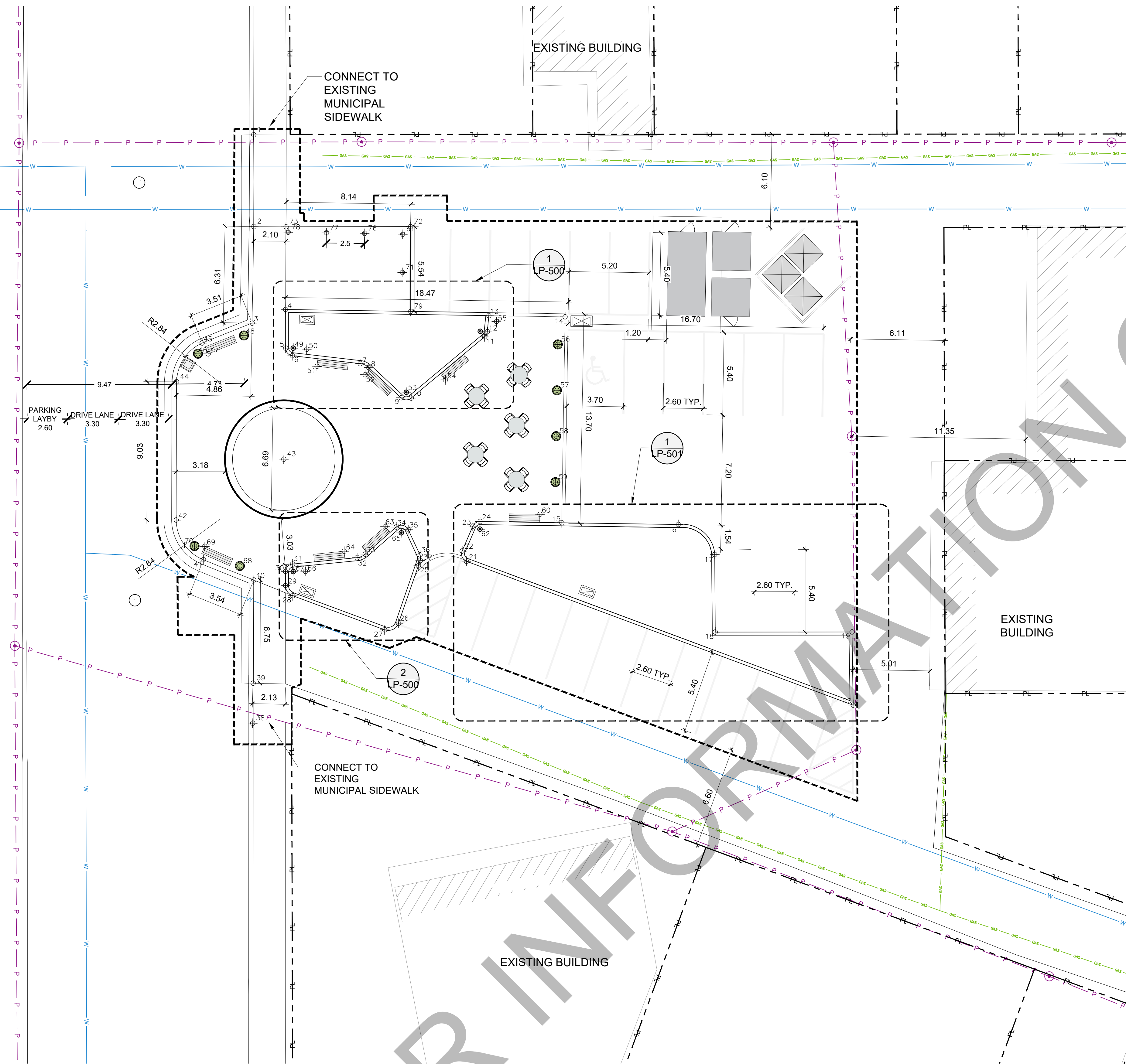
EXISTING BUILDING

CONNECT TO EXISTING MUNICIPAL SIDEWALK

EXISTING BUILDING

EXISTING BUILDING

EXISTING BUILDING



GENERAL LEGEND

- LIMIT OF WORK
- - - - - PROPERTY LINE

UTILITIES LEGEND

- ⊙ EXISTING POWER POLE
- P — EXISTING OVERHEAD POWER LINE
- EXISTING CURB
- EXISTING STORM SEWER
- SAN — EXISTING SANITARY LINE
- W — EXISTING WATER LINE
- EXISTING GAS LINE
- GAS — EXISTING GAS LINE TO BE RELOCATED BY APEX
- PROPOSED UNDERGROUND POWER LINES
- ⊙ PROPOSED IRRIGATION SPRINKLERS
- PROPOSED IRRIGATION LINES

NORTHING AND EASTING POINTS

1	N 5703859.23	E 89700.15
2	N 5703853.24	E 89700.26
3	N 5703846.93	E 89700.26
4	N 5703847.86	E 89702.43
5	N 5703845.33	E 89702.47
6	N 5703844.84	E 89702.93
7	N 5703844.41	E 89707.36
8	N 5703844.15	E 89707.93
9	N 5703842.22	E 89710.07
10	N 5703842.21	E 89710.74
11	N 5703846.30	E 89715.46
12	N 5703846.63	E 89715.63
13	N 5703847.69	E 89715.72
14	N 5703847.69	E 89720.70
15	N 5703834.23	E 89720.72
16	N 5703834.25	E 89728.32
17	N 5703832.33	E 89730.74
18	N 5703827.27	E 89730.86
19	N 5703827.43	E 89739.80
20	N 5703822.65	E 89739.95
21	N 5703831.61	E 89714.53
22	N 5703832.27	E 89714.24
23	N 5703833.91	E 89714.91
24	N 5703834.22	E 89715.37
25	N 5703831.26	E 89711.40
26	N 5703827.48	E 89710.16
27	N 5703827.04	E 89709.27
28	N 5703829.16	E 89703.23
29	N 5703829.82	E 89702.74
30	N 5703830.73	E 89702.73
31	N 5703831.23	E 89703.17
32	N 5703831.72	E 89707.39
33	N 5703831.96	E 89707.91
34	N 5703833.77	E 89709.91
35	N 5703833.61	E 89710.69
36	N 5703831.97	E 89711.49
37	N 5703831.62	E 89711.51
38	N 5703820.78	E 89700.75
39	N 5703823.40	E 89700.74
40	N 5703830.14	E 89700.66
41	N 5703831.41	E 89697.35
42	N 5703833.97	E 89695.52
43	N 5703838.07	E 89702.48
44	N 5703843.01	E 89695.40
45	N 5703845.57	E 89697.02
46	N 5703844.86	E 89696.76
47	N 5703844.87	E 89697.42
48	N 5703846.11	E 89699.74
49	N 5703845.34	E 89702.97
50	N 5703845.29	E 89703.86
51	N 5703844.18	E 89704.55
52	N 5703843.69	E 89707.70
53	N 5703842.59	E 89710.41
54	N 5703843.44	E 89712.95
55	N 5703847.31	E 89716.22
56	N 5703845.88	E 89720.25
57	N 5703842.88	E 89720.25
58	N 5703839.88	E 89720.25
59	N 5703836.88	E 89720.25
60	N 5703834.76	E 89719.27
61	N 5703852.91	E 89710.00
62	N 5703833.72	E 89715.37
63	N 5703833.78	E 89709.18
64	N 5703832.13	E 89706.53
65	N 5703833.39	E 89710.24
66	N 5703830.77	E 89704.02
67	N 5703830.74	E 89703.23
68	N 5703831.04	E 89699.74
69	N 5703832.28	E 89697.42
70	N 5703832.29	E 89696.76
71	N 5703850.41	E 89710.01
72	N 5703853.41	E 89710.50
73	N 5703853.26	E 89702.36
76	N 5703852.92	E 89707.51
77	N 5703852.91	E 89705.01
78	N 5703852.91	E 89702.51
79	N 5703847.88	E 89710.61

PROJECT  
**DRUMHELLER  
 DOWNTOWN PLAZA**  
 FOR  
 MUNICIPALITY OF DRUMHELLER

CONSULTANTS



SEALS

KEYMAP

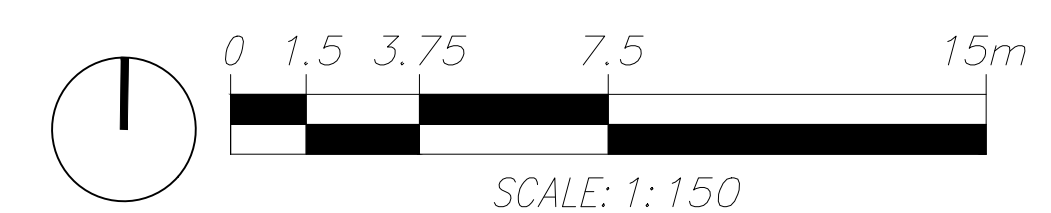


ISSUED FOR: PCO #01 WASHROOM UTILITIES  
 DATE: 2022-05-26

NO.	DESCRIPTION	DATE	BY
5	ISSUED FOR PCO #1	2022-05-26	
4	ISSUED FOR CONSTRUCTION	2022-05-06	
3	ISSUED LANDSCAPE ADDENDUM #3	2022-03-09	
2	ISSUED LANDSCAPE ADDENDUM #1	2022-02-18	
1	ISSUED FOR TENDER	2022-02-15	

DESIGNED BY: ZW/MW CHECKED BY: MW

DRAWING TITLE:  
**LAYOUT PLAN**



LL-100

EXISTING BUILDING

EXISTING BUILDING

### MATERIALS LEGEND

SYMBOL	3 SOFTSCAPE DESCRIPTION	DETAIL
[Symbol]	3-01 PLANTING SOIL TYPE 1 - 975MM DEPTH - 75MM BARK MULCH - 900MM TOPSOIL	5/LP-502
[Symbol]	3-02 PLANTING SOIL TYPE 2 - 375MM DEPTH - 75MM BARK MULCH - 300MM TOPSOIL @ ROOTBALL - SOIL AMENDMENTS (REFER TO SPECS)	3/LP-502
[Symbol]	3-03 BARK MULCH TOPUP IN EXISTING PLANTER - 75MM BARK MULCH	5/LP-502
SYMBOL	4 HARDSCAPE DESCRIPTION	DETAIL
[Symbol]	4-01 PEDESTRIAN UNIT PAVING - 65MM PAVERS - 25MM SAND SETTING BED	1/LM-500
[Symbol]	4-02 CONCRETE PAVING - LIGHT DUTY - CONTROL JOINTS EVERY 1.5M2 - EXPANSION JOINTS EVERY 3M2	2/LM-500
[Symbol]	4-03 CONCRETE PAVING - HEAVY DUTY - CONTROL JOINTS EVERY 1.5M2 - EXPANSION JOINTS EVERY 3M2	3/LM-500
[Symbol]	4-04 ASPHALT PAVING REPAIR - 75MM ASPHALT - 200 MM DEPTH 20MM DIAMETER CRUSH - 300MM DEPTH PITRUN	5/LM-500
[Symbol]	4-05 STANDARD CURB AND GUTTER	REFER TO CIVIL
[Symbol]	4-06 CONCRETE PLANTER CURB - 200MM HEIGHT ABOVE GRADE - 200MM WIDTH	7/LM-500
[Symbol]	4-09 FLUSH CONCRETE HEADER - 200MM WIDE	9/LM-500
SYMBOL	5 FENCES & GATES DESCRIPTION	DETAIL
[Symbol]	5-02 WASTE BIN ENCLOSURE	6/LM-502
SYMBOL	6 SITE FURNISHINGS & FEATURES DESCRIPTION	DETAIL
[Symbol]	6-01 TOWN OF DRUMHELLER EXISTING PLANTERS TO BE RELOCATED FROM EXISTING STAGE AREA BY CONTRACTOR.	REFER TO SPECS
[Symbol]	6-08 WASTE RECEPTACLE	REFER TO SPECS
[Symbol]	6-12 PARKING LOT LINE PAINT	2/LM-501
[Symbol]	6-13 EXISTING BISTRO TABLE	REFER TO SPECS
[Symbol]	6-15 DINOSAUR THEMED BENCHES	REFER TO SPECS
[Symbol]	6-16 DINO STAGE - DESIGN BUILD, FOR INFORMATION ONLY C.I.P. PLATFORM - 150MM HIGH CONC STEPS - 150MM HIGH - 500MM WIDE	12/LM-500
[Symbol]	6-17 DINO STAGE - DESIGN BUILD, FOR INFORMATION ONLY CANOPY	LM-503
[Symbol]	6-18 BOLLARD - SURFACE MOUNTED	
SYMBOL	8 ELECTRICAL DESCRIPTION	DETAIL
[Symbol]	8-01 PEDESTRIAN LIGHT	REFER TO ELECTRICAL
[Symbol]	8-02 PEDESTAL	REFER TO ELECTRICAL

**PROJECT**  
**DRUMHELLER DOWNTOWN PLAZA**  
 FOR MUNICIPALITY OF DRUMHELLER



SEALS



ISSUED FOR: PCO #01 WASHROOM UTILITIES  
 DATE: 2022-05-26

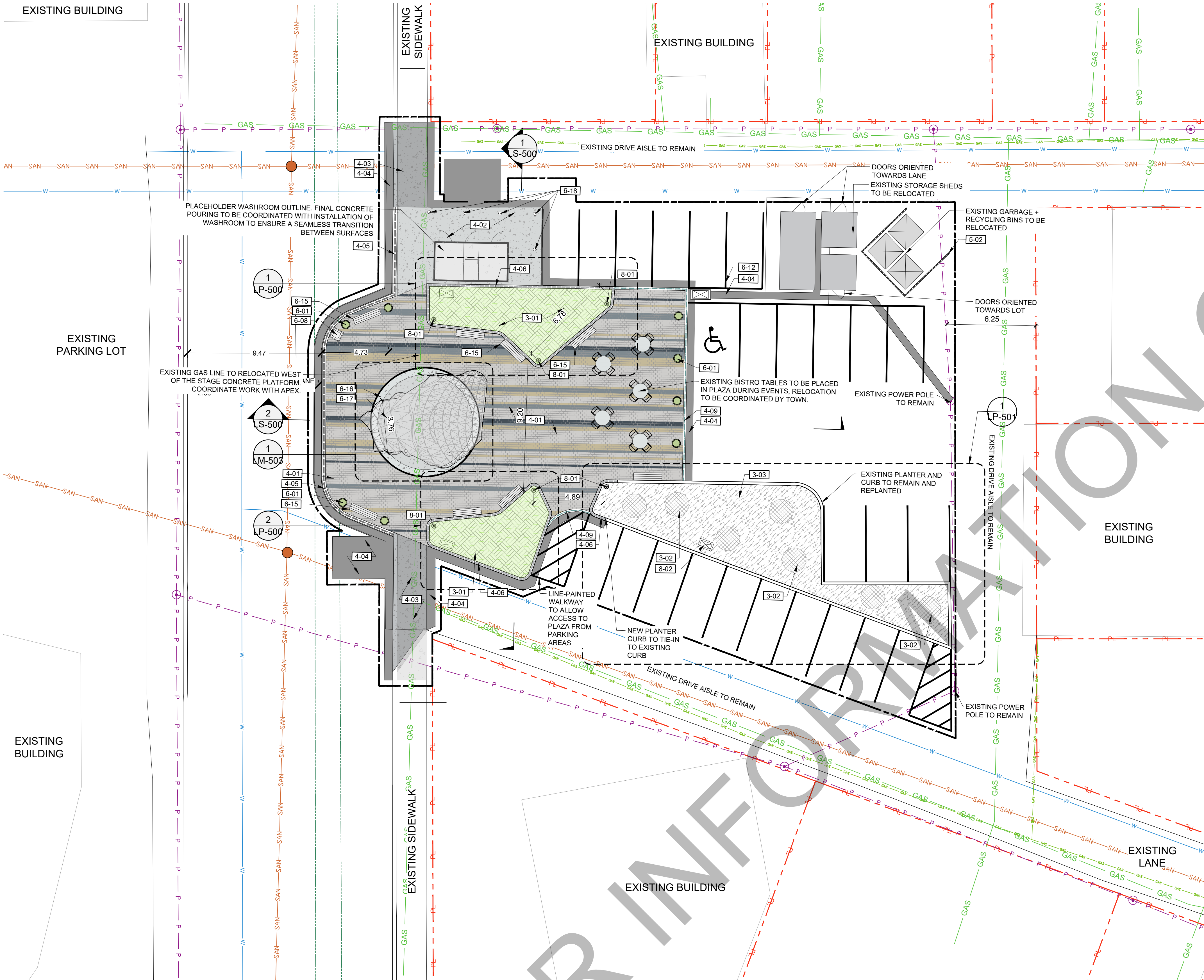
REVISIONS:	NO.	DESCRIPTION.	DATE.	BY.
	5	ISSUED FOR PCO #1	2022-05-26	
	4	ISSUED FOR CONSTRUCTION	2022-05-06	
	3	ISSUED LANDSCAPE ADDENDUM #3	2022-03-09	
	2	ISSUED LANDSCAPE ADDENDUM #1	2022-02-18	
	1	ISSUED FOR TENDER	2022-02-15	

DESIGNED BY: ZW/MW CHECKED BY: MW  
 PLOT DATE: 2022-05-04  
 DRAWING FILE NAME:  
 LM-100 PHASE 1 MATERIALS PLAN.dwg

DRAWING TITLE:  
**PLAZA - PHASE 1**

# LM-101

DRUMHELLER DOWNTOWN PLAZA  
 210201



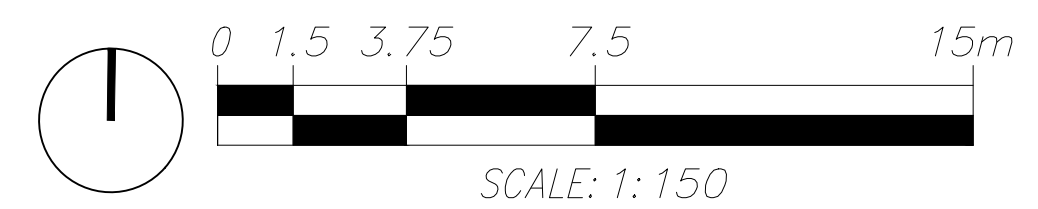
### GENERAL LEGEND

- LIMIT OF WORK
- - - PROPERTY LINE

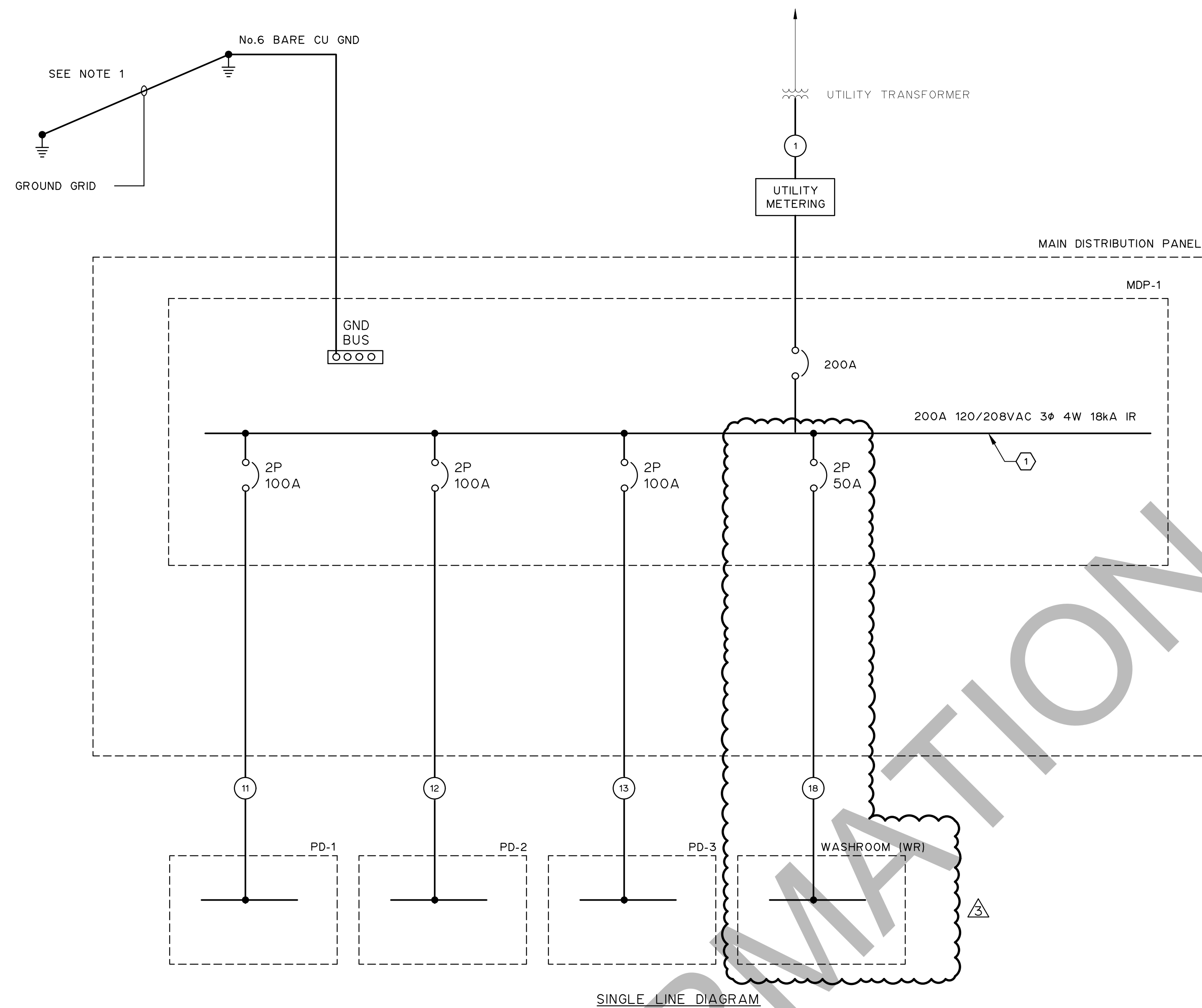
### UTILITIES LEGEND

- ⊙ EXISTING POWER POLE
- P — EXISTING OVERHEAD POWER LINE
- EXISTING CURB
- EXISTING STORM SEWER
- SAN — EXISTING SANITARY LINE
- W — W — EXISTING WATER LINE
- EXISTING GAS LINE
- GAS — EXISTING GAS LINE TO BE RELOCATED BY APEX
- PROPOSED UNDERGROUND POWER LINES
- PROPOSED IRRIGATION SPRINKLERS
- PROPOSED IRRIGATION LINES

TOTAL PARKING STALLS: 25







SINGLE LINE DIAGRAM

PANEL: MDP-1											
LOCATION: DRUMHELLER PLAZA											
120/208V 3PH 4W 200A											
DESCRIPTION	LOAD (KW)	TRIP AMPS	BRK. NO.	PHASE	BRK. NO.	TRIP AMPS	LOAD (KW)	DESCRIPTION	LOAD (KW)	TRIP AMPS	BRK. NO.
STAGE (50A)	8.3	50	1	A	2	100	16.6	PD-1			
			3	B	4	100	16.6				
50A RECEPTACLE LOCAL	8.3	50	5	C	6	100	16.6	PD-2			
			7	A	8	100	16.6				
30A RECEPTACLE LOCAL	2.9	30	9	B	10	100	16.6	PD-3			
20A RECEPTACLE LOCAL	1.9	20	11	C	12	100	16.6				
STAGE NORTH (20A)	1.9	20	13	A	14	20	1.9	STAGE SOUTH (20A)			
STAGE NORTH (20A)	1.9	20	15	B	16	20	1.9	STAGE SOUTH (20A)			
STAGE NORTH (20A)	1.9	20	17	C	18	20	1.9	STAGE SOUTH (20A)			
IRRIGATION CONTROL PANEL	1.9	20	19	A	20	20	1.9	LIGHT POLE RECEPTACLE NORTH			
LIGHTING CONTROL PANEL	1.9	20	21	B	22	20	1.9	LIGHT POLE RECEPTACLE SOUTH			
LIGHTS	1.9	20	23	C	24	20	1.9	MDP-1 INTERIOR LIGHTS			
MDP-1 INTERIOR RECEPTACLE (POWER)	1.4	15	25	A	26	15	1.4	MDP-1 INTERIOR RECEPTACLE (CONTROL)			
HEATER	0.4	15	27	B	28	15		SPARE			
SPARE		15	29	C	30	15		SPARE			
			31	A	32	50	5.0	WASHROOM PANEL			
			33	B	34						
			35	C	36						
			37	A	38						
			39	B	40						
			41	C	42						

MDP-1 PANEL SCHEDULE

PANEL: PD-1											
LOCATION:											
120/208V 1PH 3W 100A											
DESCRIPTION	LOAD (W)	TRIP AMPS	BRK. NO.	PHASE	BRK. NO.	TRIP AMPS	LOAD (W)	DESCRIPTION	LOAD (W)	TRIP AMPS	BRK. NO.
50A RECEPTACLE		50	1	A	5	30		20A RECEPTACLE			
			2	B	6	20		SPARE			
30A RECEPTACLE		30	3	A	7			SPARE			
20A RECEPTACLE		20	4	B	8			SPARE			

PANEL: PD-2											
LOCATION:											
120/208V 1PH 3W 100A											
DESCRIPTION	LOAD (W)	TRIP AMPS	BRK. NO.	PHASE	BRK. NO.	TRIP AMPS	LOAD (W)	DESCRIPTION	LOAD (W)	TRIP AMPS	BRK. NO.
50A RECEPTACLE		50	1	C	5	30		20A RECEPTACLE			
			2	A	6	20		SPARE			
30A RECEPTACLE		30	3	C	7			SPARE			
20A RECEPTACLE		20	4	A	8			SPARE			

PANEL: PD-3											
LOCATION:											
120/208V 1PH 3W 100A											
DESCRIPTION	LOAD (W)	TRIP AMPS	BRK. NO.	PHASE	BRK. NO.	TRIP AMPS	LOAD (W)	DESCRIPTION	LOAD (W)	TRIP AMPS	BRK. NO.
50A RECEPTACLE		50	1	B	5	30		20A RECEPTACLE			
			2	C	6	20		SPARE			
30A RECEPTACLE		30	3	B	7			SPARE			
20A RECEPTACLE		20	4	C	8			SPARE			

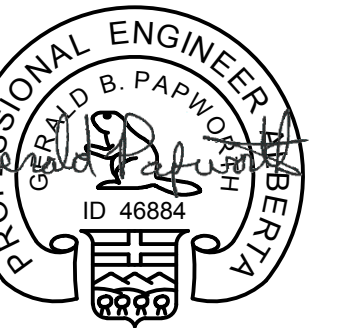
- NOTES:
- NEW GROUND GRID AS FOLLOWS:
    - THERE MUST BE TWO MANUFACTURED ROD ELECTRODES C/W GROUND WELL AND CLAMP.
    - EACH ROD SHALL BE MINIMUM 19mm DIAMETER AND 3m LENGTH.
    - THE RODS MUST BE SPACED 3m APART.
    - THE RODS MUST BE BONDED TOGETHER BY BARE No.6 GROUNDING CONDUCTOR.
    - GROUND WELL TO BE ACE MANUFACTURING MODEL AGW.

- KEYNOTES:
- ONLY SUB PANELS SHOWN ON SINGLE LINE. SEE MDP-1 PANEL SCHEDULE FOR ALL LOADS.

THIS DRAWING MAY HAVE BEEN MODIFIED FROM ITS ORIGINAL SIZE. ALL SCALE NOTATIONS INDICATED (i.e. 1:1000 etc) ARE BASED ON 24"x36" FORMAT DRAWINGS

NO.	DATE	REVISION
2	22-05-27	FOR WASHROOM ADDITION
2	22-05-06	ISSUED FOR CONSTRUCTION
1	22-02-15	ISSUED FOR TENDER

PERMIT TO PRACTICE  
MPE ENGINEERING LTD.  
Signature: *Gerald Papworth*  
APEGA ID: 46884  
Date: MAY 27, 2022  
PERMIT NUMBER: P 3680  
The Association of Professional Engineers and Geoscientists of Alberta (APEGA)



MAY 27, 2022



MUNICIPALITY OF DRUMHELLER

DRUMHELLER DOWNTOWN PLAZA  
ELECTRICAL  
SINGLE LINE DIAGRAM

DESIGNED	M.T.F., G.B.P.	JOB	2728-011-00
DRAWN	Y.F.S., M.T.F.	SCALE	NTS
DATE	JANUARY 2022	DRAWING	E2.1

LUMINAIRE SCHEDULE											
TAG	DESCRIPTION	MANUFACTURER/MODEL (OR APPROVED EQUIVALENT)	MOUNTING HEIGHT	LAMP	LENS	FIXTURE LUMEN OUTPUT	COLOUR TEMPERATURE	MOUNTING	VOLT	LIFESPAN	REMARKS
A	POLE MOUNTED FIXTURE	LUMINIS SC655L1L15R5512OVGRK3HLP CST	12',14',16'	LED	HEXCELL LOUVER	1599	3000K	POLE MOUNT	120	60,000 HRS	3 LIGHTS MOUNTED AT DIFFERENT HEIGHTS ON EACH POLE
B	LIGHT POLE 18'	LUMINIS PAA518-1 GRT CGF									18' POLE

CABLE SCHEDULE											
REF	CABLE TAG	FROM	TO	CONDUCTOR DETAILS			CONDUIT/CABLE	VOLTAGE	LENGTH	NOTES	
		EQUIP TAG	EQUIP TAG	NO. OF COND	SIZE AWG	TYPE		(METERS)			
1	MDP-1	UTILITY	MDP-1	4	250	ACWU90		TBD	208VAC	UTILITY	
11	PD-1	MDP-1	PD-1	3	1/0	ACWU90		TBD	208VAC	PEDESTAL 1	
12	PD-2	MDP-1	PD-2	3	1/0	ACWU90		TBD	208VAC	PEDESTAL 2	
13	PD-3	MDP-1	PD-3	3	1/0	ACWU90		TBD	208VAC	PEDESTAL 3	
14	STG-N2	MDP-1	STG-N	3	8	TECK90		TBD	208VAC	STAGE NORTH 50A RECEPTACLE	
15	STG-N1	MDP-1	STG-N	6	10	TECK90		TBD	120VAC	STAGE NORTH 20A RECEPTACLES	
16	STG-S1	MDP-1	STG-S	6	10	TECK90		TBD	120VAC	STAGE NORTH 20A RECEPTACLES	
17	SHD	MDP-1	SHD	4	12	TECK90		TBD	120VAC	SHED POWER	
18	WR	MDP-1	WR	3 + GND	8	R90	C18	TBD	208VAC	WASHROOM PANEL	
21	LP-1P	MDP-1	LP-1	4	12	TECK90		TBD	120VAC	LIGHT POLE 1 LIGHTS/RECEPTACLE	
22	LP-2P	LP-1	LP-2	4	12	TECK90		TBD	120VAC	LIGHT POLE 2 LIGHTS/RECEPTACLE	
23	LP-3P	LP-2	LP-3	4	12	TECK90		TBD	120VAC	LIGHT POLE 3 LIGHTS/RECEPTACLE	
24	LP-4P	MDP-1	LP-4	4	12	TECK90		TBD	120VAC	LIGHT POLE 4 LIGHTS/RECEPTACLE	
25	LP-5P	LP-4	LP-5	4	12	TECK90		TBD	120VAC	LIGHT POLE 5 LIGHTS/RECEPTACLE	
26	LP-6P	LP-5	LP-6	4	12	TECK90		TBD	120VAC	LIGHT POLE 6 LIGHTS/RECEPTACLE	
31	LP-1C	MDP-1	LP-1	1PR	18	SHLD	C31	TBD	10VDC	LIGHT POLE 1 LIGHT CONTROL	
32	LP-2C	LP-1	LP-2	1PR	18	SHLD	C32	TBD	10VDC	LIGHT POLE 2 LIGHT CONTROL	
33	LP-3C	LP-2	LP-3	1PR	18	SHLD	C33	TBD	10VDC	LIGHT POLE 3 LIGHT CONTROL	
34	LP-4C	MDP-1	LP-4	1PR	18	SHLD	C34	TBD	10VDC	LIGHT POLE 4 LIGHT CONTROL	
35	LP-5C	LP-4	LP-5	1PR	18	SHLD	C35	TBD	10VDC	LIGHT POLE 5 LIGHT CONTROL	
36	LP-6C	LP-5	LP-6	1PR	18	SHLD	C36	TBD	10VDC	LIGHT POLE 6 LIGHT CONTROL	

CONDUIT SCHEDULE									
REF	CONDUIT TAG	FROM	TO	CONDUIT DETAILS			VOLTAGE	LENGTH	NOTES
		EQUIP TAG	EQUIP TAG	QTY	SIZE	TYPE		(METERS)	
18	C-18	MDP-1	WR	1	35	RPVC	208VAC	TBD	WASHROOM DISTRIBUTION PANEL
31	C31	MDP-1	LP-1	1	21	HDPE	24VDC	TBD	CONTROL/NETWORK
32	C32	LP-1	LP-2	1	21	HDPE	24VDC	TBD	CONTROL/NETWORK
33	C33	LP-2	LP-3	1	21	HDPE	24VDC	TBD	CONTROL/NETWORK
34	C34	MDP-1	LP-4	1	21	HDPE	24VDC	TBD	CONTROL/NETWORK
35	C35	LP-4	LP-5	1	21	HDPE	24VDC	TBD	CONTROL/NETWORK
36	C36	LP-5	LP-6	1	21	HDPE	24VDC	TBD	CONTROL/NETWORK
41	C41	ISP	MDP-1	1	35	HDPE	24VDC	TBD	INTERNET PROVIDER
42	C42	MDP-1	STG-N	1	21	HDPE	24VDC	TBD	NETWORK STAGE
43	C43	MDP-1	WR	1	21	HDPE	24VDC	TBD	WASHROOM CONTROL NETWORK
51	C51	MDP-1	VLV-N	1	35	HDPE	24VDC	TBD	IRRIGATION VALVE BOX NORTH
52	C52	MDP-1	VLV-S	1	35	HDPE	24VDC	TBD	IRRIGATION VALVE BOX SOUTH

EQUIPMENT SCHEDULE					
ITEM	QUANTITY	DESCRIPTION	MAKE	MODEL	NOTES
E1	1	KIOSK	VALID	DSKA664628-220155	INCLUDE INSULATION AND LIGHTING
E2	1	KIOSK PRECAST CONCRETE BASE	WESTCON	W2-05	
E3	1	DISTRIBUTION PANEL 42 CIRCUIT	EATON	PRL1q	
E4	3	PEDESTAL C/W 50A, 30A, 2X20A	VALID	CPB-PM-MB-HB	
E5	1	LIGHTING RELAY PANEL	ACUITY BRANDS nLIGHT	8SPR	
E6	1	SURGE PROTECTION DEVICE	SURGE PURE	M2-1208-4	
E7	1	ETHERNET SWITCH 5 PORT			
E8	1	HEATER 400W	HAMMOND	FLHTF400A115	
E9	6	LIGHT POLE BASE	WESTCON	W4-07 (1)	9" BOLT CIRCLE DIAMETER

- NOTES:
- THE CONDUIT AND CABLE SCHEDULE IS INTENDED TO SHOW THE MAJORITY OF THE POWER AND INSTRUMENTATION CABLE RUNS. INSTALL AND CONNECT ALL CABLES AND CONDUIT TO PROVIDE A COMPLETE AND OPERATIONAL SYSTEM.
  - SEE ELECTRICAL PANEL AND MECHANICAL EQUIPMENT SCHEDULES FOR ADDITIONAL WIRING REQUIREMENTS.
  - LIKE VOLTAGE WIRING CAN BE COMBINED IN COMMON CONDUIT PROVIDING MINIMUM 25% SPARE IN ACCOUNTED FOR IN ADD IN TO CEC CONDUIT FILL REQUIREMENTS. SEPARATE CONDUITS ARE REQUIRED FOR 120VAC, 24VDC, ANALOG SIGNALS, COMMUNICATION.
  - ALL IN CONCRETE SLAB RIGID ALUMINUM (ALUM) CONDUIT TO HAVE OUTSIDE OF CONDUIT COVERED WITH CORROSION PROTECTIVE COATING BITUMASTIC, ASPHALT BASED PAINT OR PVC COATING.
  - IN CONCRETE SLAB CONDUITS TO BE RPVC OR RIGID ALUMINUM.
  - IN CEILING CONDUITS TO BE EMT.
  - SURFACE MOUNT CONDUITS TO BE RPVC AND ARE ONLY PERMITTED FOR VERTICAL RUNS INTO CEILING SPACE AND HORIZONTAL RUNS LESS THAN 600. INSTALL ALL CONDUITS IN WALLS, CEILINGS AND FLOORS UNLESS OTHERWISE INDICATED.
  - ALL CABLING SIZE BASED ON 75° TERMINATION TEMPERATURE.
  - PROVIDE AND INSTALL APPROPRIATELY SIZED GROUND CABLE FOR ALL CABLE RUNS.
  - ALL CABLES ARE TO BE COPPER UNLESS OTHERWISE NOTED.
  - GROUND WIRE NOT SHOWN.

- KEYNOTES:
- ALTERNATE MAKE/MODELS INCLUDE:  
MAKE: LAFARGE, MODEL: 9203  
MAKE: PROFORM, MODEL: LP2134

THIS DRAWING MAY HAVE BEEN MODIFIED FROM ITS ORIGINAL SIZE. ALL SCALE NOTATIONS INDICATED (i.e. 1:1000 etc) ARE BASED ON 24"x36" FORMAT DRAWINGS

ISSUE	YY-MM-DD	REVISION
2	22-05-27	FOR WASHROOM ADDITION
2	22-05-06	ISSUED FOR CONSTRUCTION
1	22-02-15	ISSUED FOR TENDER

PERMIT TO PRACTICE  
MPE ENGINEERING LTD.  
Signature: *Gerald Papworth*  
APEGA ID: 46884  
Date: MAY 27, 2022  
PERMIT NUMBER: P 3680  
The Association of Professional Engineers and Geoscientists of Alberta (APEGA)

PROFESSIONAL ENGINEER  
G. B. PAPWORTH  
ID 46884  
MAY 27, 2022



MUNICIPALITY OF DRUMHELLER

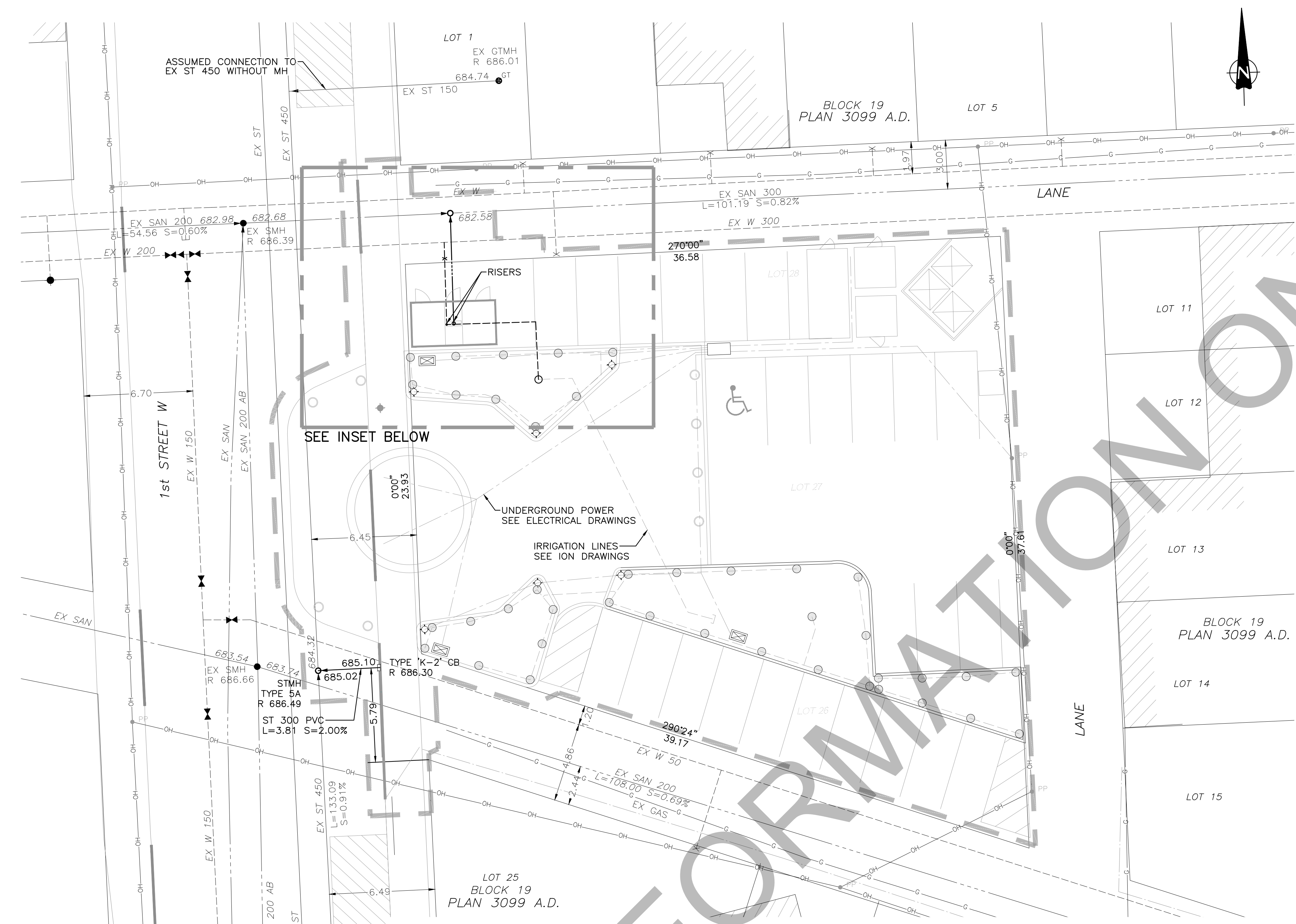
DRUMHELLER DOWNTOWN PLAZA  
ELECTRICAL  
SCHEDULES

DESIGNED	M.T.F., G.B.P.	JOB	2728-011-00
DRAWN	Y.F.S., M.T.F.	SCALE	NTS
DATE	JANUARY 2022	DRAWING	E2.4

**LEGAL DESCRIPTION**  
 LOTS: 26,27,28  
 BLOCK: 19  
 PLAN: 3099 A.D.  
 SE 11-29-20 W4M  
 AREA: 0.113 Ha.

**CONSTRUCTION AREA**  
 AREA: 0.14 Ha.

**OWNER:**  
 MUNICIPALITY OF DRUMHELLER



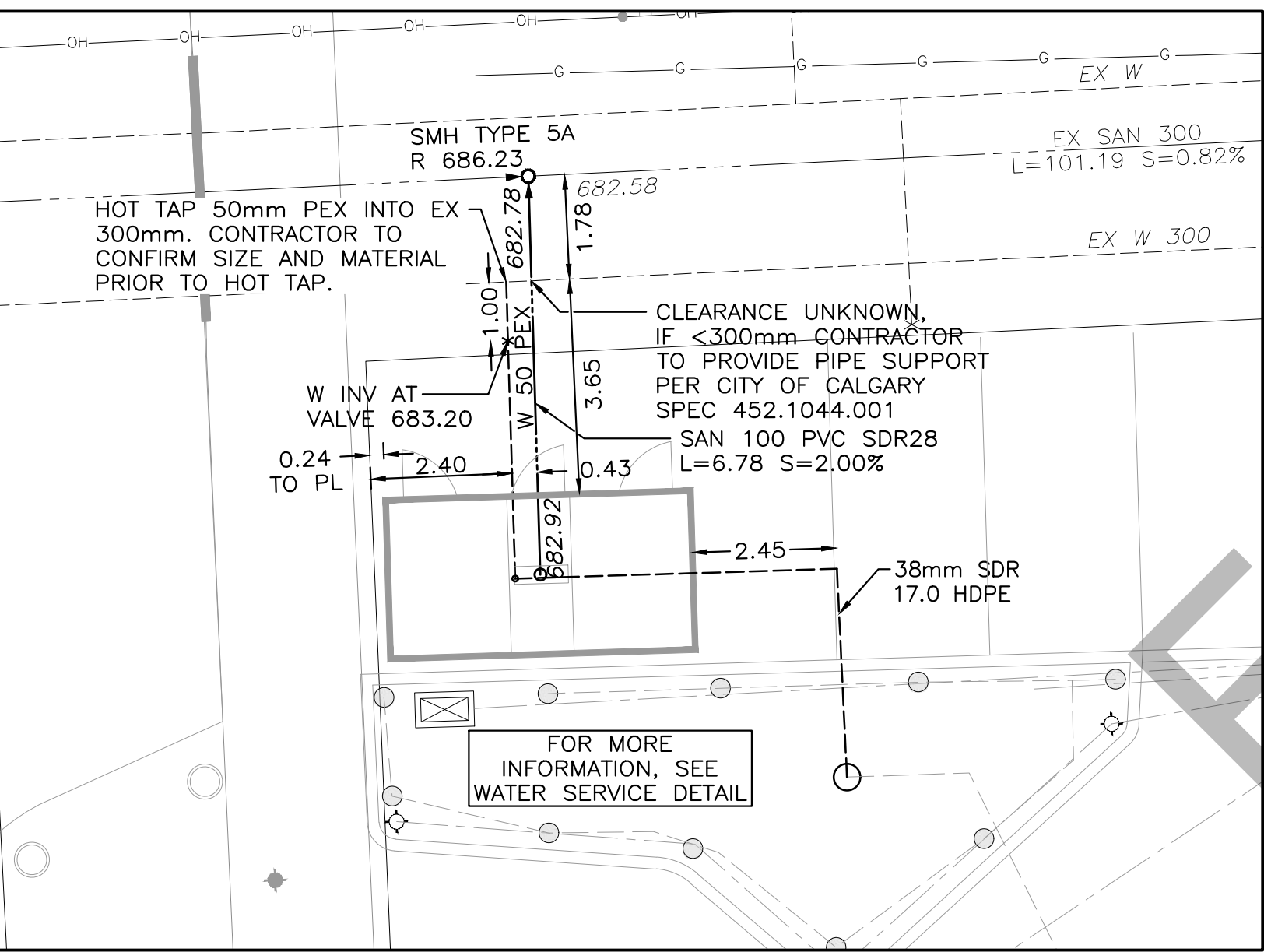
THE EXISTENCE, LOCATION AND ELEVATION OF ALL UTILITIES AS SHOWN ON ANY PLANS MAY BE BASED ON INFORMATION RECEIVED FROM THE RESPECTIVE AUTHORITIES AND ARE NOT GUARANTEED BY THE ENGINEER. NO RESPONSIBILITY IS IMPLIED OR ASSUMED BY THE ENGINEER AS TO THE LOCATION AND ELEVATION OR ANY OMISSIONS. THE CONTRACTOR OR ANY THIRD-PARTY IS RESPONSIBLE FOR DETERMINING THE EXISTENCE, LOCATION AND ELEVATION OF ALL SUCH UTILITIES AND MUST CONTACT THE VARIOUS UTILITY COMPANIES FOR ON SITE INFORMATION PRIOR TO COMMENCEMENT OF ANY OPERATIONS.

- NOTES:**  
**GENERAL NOTES:**
1. ALL DIMENSIONS ARE IN METERS.
  2. PIPE DIAMETERS ARE IN MILLIMETERS.
  3. SITE LAYOUT PROVIDED BY O2 PLANNING AND DESIGN FEB. 2, 2022.
  4. EX SITE INFORMATION SOURCED FROM HUNTER WALLACE SURVEYS LTD. MAY 2021, TOWN SUPPLIED GIS DATA, AND MPE SURVEY SEPT. 2021.
  5. USE O2 PLANNING AND DESIGN DRAWINGS FOR SITE LAYOUT.
  6. CONTRACTOR SHALL ARRANGE FOR REQUIRED INSPECTIONS OF DEEP UTILITIES PRIOR TO BACKFILLING.
  7. THIS PLAN IS TO BE READ IN CONJUNCTION WITH THE LATEST LANDSCAPING SITE PLANS.
  8. THIS DRAWING IS TO BE USED FOR SITE SERVICING AND GRADING INFORMATION ONLY.
  9. ALL CONCRETE AND ASPHALT WORK SHALL BE CONSTRUCTED ACCORDING TO CITY OF CALGARY STANDARDS.
  10. REFER TO O2 PLANNING AND DESIGN FOR LIGHT AND HEAVY DUTY CONCRETE SPECIFICATIONS.
  11. THE CONTRACTOR SHALL CHECK AND VERIFY ALL DIMENSIONS, LEVELS, AND REPORT ANY ERRORS OR OMISSIONS TO THE ENGINEER PRIOR TO COMMENCEMENT OF WORK. DO NOT SCALE FROM DRAWINGS.
  12. TIE IN ELEVATIONS TO EXISTING CONDITIONS TO BE CONFIRMED PRIOR TO CONSTRUCTION.
  13. ONCE THE CONSTRUCTION SURVEY IS COMPLETE, IT IS THE CONTRACTOR'S RESPONSIBILITY TO CHECK EXISTING INVERT ELEVATIONS AND CONFIRM THEY MATCH ELEVATIONS SHOWN ON THE DRAWINGS. ANY DISCREPANCIES ARE TO BE BROUGHT TO THE ATTENTION OF THE ENGINEER IMMEDIATELY.
  14. THE EXISTING ASPHALT IS TO BE CUT BACK 0.5m BEYOND EXCAVATION LIMITS, AND EXPOSED GRANULAR BASE TO BE RECONDITIONED AND RE-COMPACTED PRIOR TO RE-SURFACING.

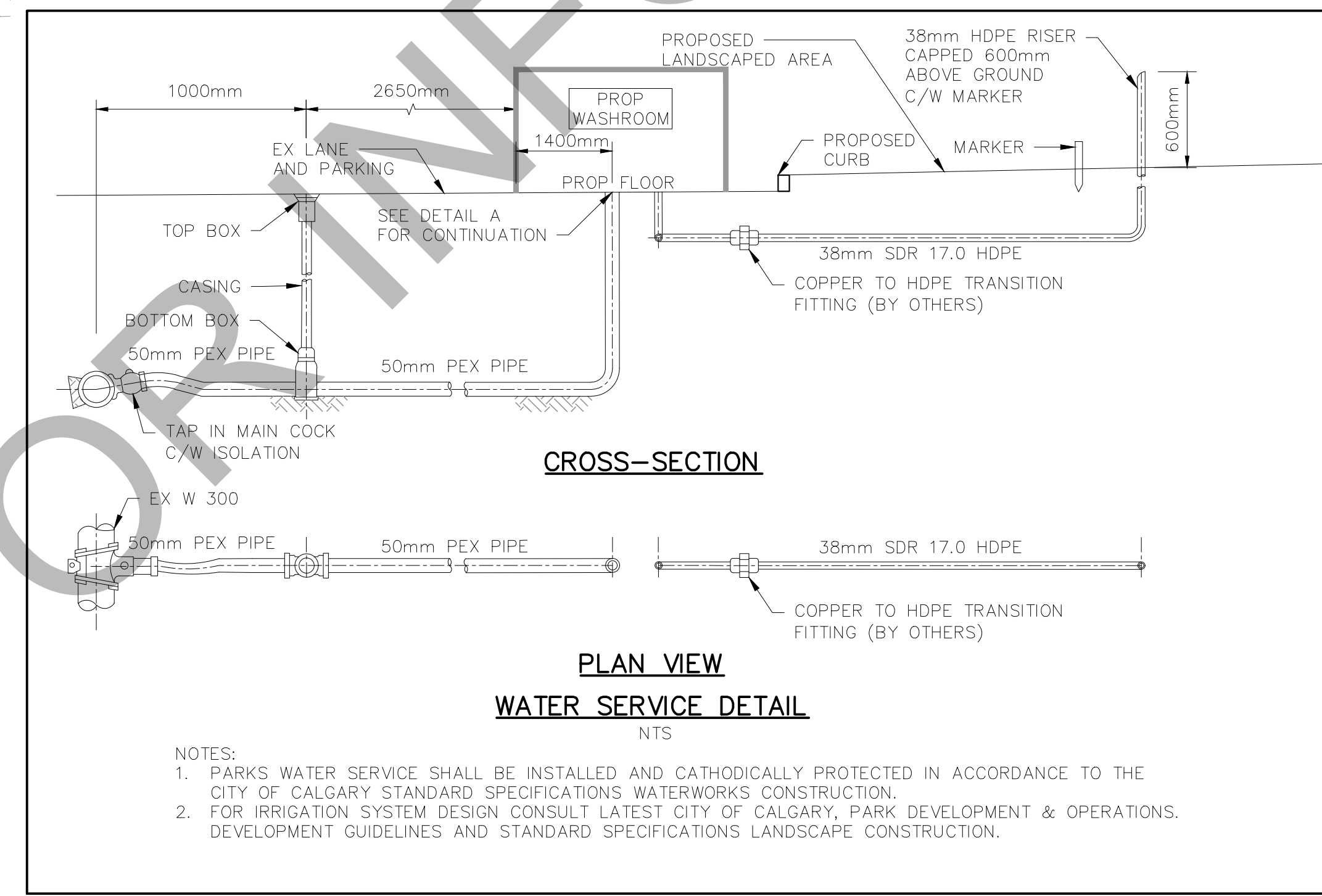
- SEWER SYSTEM NOTES:**
1. SEWERS SHALL BE DESIGNED, PROCURED, INSTALLED, INSPECTED, AND TESTED IN ACCORDANCE WITH THE CITY OF CALGARY SPECIFICATIONS FOR SEWER CONSTRUCTION, CURRENT EDITION.
  2. PIPE, MANHOLES, CATCHBASINS, RIMS, FRAMES, GRATES, AND ALL OTHER APPURTENANCES SHALL BE IN ACCORDANCE WITH THE CITY OF CALGARY LIST OF APPROVED MATERIALS.
  3. MANHOLES SHALL BE "TYPE 5A" SRC UNLESS NOTED OTHERWISE.
  4. MANHOLE BENCHING SHALL BE CONSTRUCTED AS PER CITY OF CALGARY STANDARD DRAWING 452.1003.007.
  5. LEADS FOR SINGLE CATCH BASINS SHALL BE 300mm DIAMETER SLOPED AT 2% MINIMUM TO THE MANHOLE.
  6. SEWER PIPE SHALL BE PVC DR35 UNLESS NOTES OTHERWISE.
  7. PIPE SHALL BE INSTALLED IN "TYPE 2" TRENCH AS PER CITY OF CALGARY STANDARD DRAWING 452.1005.003. BEDDING MATERIAL SHALL BE CLASS 1B.
  8. MINIMUM COVER OVER STORM MAINS AND SERVICES SHALL BE 1.20m. FOR SEWERS WITH LESS THAN THE MINIMUM SPECIFIED COVER PROVIDE INSULATION AS PER WITH CITY OF CALGARY STANDARD DRAWING 453.1045.001.

- WATER SYSTEM NOTES:**
1. POTABLE WATER INFRASTRUCTURE SHALL BE DESIGNED, PROCURED, INSTALLED, INSPECTED, AND TESTED IN ACCORDANCE WITH THE CITY OF CALGARY STANDARD SPECIFICATIONS FOR WATERWORKS CONSTRUCTION, CURRENT EDITION.
  2. PIPE, VALVES, HYDRANTS, AND ALL OTHER APPURTENANCES SHALL BE IN ACCORDANCE WITH THE CITY OF CALGARY LIST OF APPROVED MATERIALS.
  3. CATHODIC PROTECTION SHALL BE PROVIDED FOR METALLIC ELEMENTS OF THE WATER SYSTEM IN ACCORDANCE WITH THE CITY OF CALGARY STANDARD SPECIFICATIONS FOR WATERWORKS CONSTRUCTION, CURRENT EDITION.
  4. PIPE SHALL BE INSTALLED IN "TYPE 2" TRENCH AS PER CITY OF CALGARY STANDARD DRAWING 452.1005.003. BEDDING MATERIAL SHALL BE CLASS 1B.
  5. MINIMUM COVER OVER WATER MAINS AND SERVICES SHALL BE 3.00m AND 3.30m FOR CLAY AND GRAVEL SOILS RESPECTIVELY. FOR WATER PIPES WITH LESS THAN THE MINIMUM SPECIFIED COVER PROVIDE INSULATION AS PER CITY OF CALGARY STANDARD DRAWING 453.1045.001.

THIS DRAWING MAY HAVE BEEN MODIFIED FROM ITS ORIGINAL SIZE. ALL SCALE NOTATIONS INDICATED (i.e. 1:1000 etc) ARE BASED ON 24"x36" FORMAT DRAWINGS

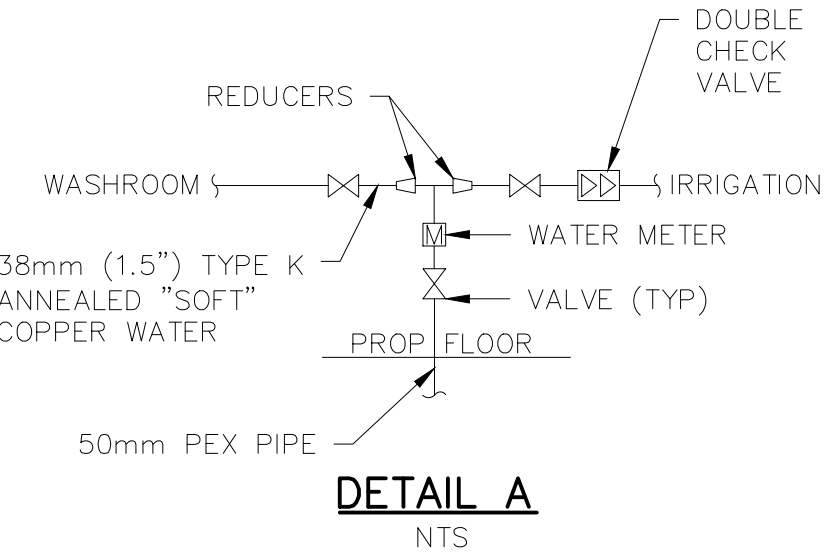


**WASHROOM SERVICING INSET**  
 SCALE: 1:100



**CROSS-SECTION**  
**PLAN VIEW**  
**WATER SERVICE DETAIL**  
 NTS

- NOTES:**
1. PARKS WATER SERVICE SHALL BE INSTALLED AND CATHODICALLY PROTECTED IN ACCORDANCE TO THE CITY OF CALGARY STANDARD SPECIFICATIONS WATERWORKS CONSTRUCTION.
  2. FOR IRRIGATION SYSTEM DESIGN CONSULT LATEST CITY OF CALGARY, PARK DEVELOPMENT & OPERATIONS. DEVELOPMENT GUIDELINES AND STANDARD SPECIFICATIONS LANDSCAPE CONSTRUCTION.



**DETAIL A**  
 NTS

**LEGEND**

EXISTING	CONSTRUCTION BOUNDARY
EX SAN 200	SAN MAIN & MANHOLE
EX ST 450	STORM MAIN & MANHOLE
EX W 200	WATER MAIN
●	HYDRANT
⊗	VALVE
⌋	PLUG
⊗	REDUCER
×	SERVICE VALVE
●GT	GRATED TOP MANHOLE
■	CATCH BASIN
◆	LAMP STANDARD
●PP	POWER POLE
—G—G—	GAS LINE
—OH—OH—	OVERHEAD POWER
⊕686.75	EXISTING ELEVATION
—	PROPOSED
×	SERVICE VALVE
○	RISER
—W 25mm PEX—	WATER MAIN
—ST 300 PVC—	CATCH BASIN LEAD & MANHOLE
⊕	CATCH BASIN
○	TYPE 5A MANHOLE
⊕	LAMP STANDARD
⊕	PROPOSED TRANSFORMER
○	PLANTER
—	PROPOSED BENCH
—	UNDERGROUND POWER
○	IRRIGATION LINES
○	SPRINKLER

ISSUE	DATE	REVISION
2	22-05-06	ISSUED FOR CONSTRUCTION
1	22-02-15	ISSUED FOR TENDER

ISSUE	DATE	REVISION
	MAY 6, 2022	
	MAY 6, 2022	



MUNICIPALITY OF DRUMHELLER

DRUMHELLER DOWNTOWN PLAZA  
 DEVELOPMENT SITE SERVICING PLAN

DESIGNED	D.M.J.	JOB	2728-011-00
DRAWN	D.M.J.	SCALE	1:150
DATE	AUG. 2021	DRAWING	C1

USER: D:\JOHNSON\2022\0\_45\_35\_PV\PAATH\N\2728\_02\_Engineering\01\_Drumheller\_Phase\_Design\AutoCAD\2728-01\_DSSP.dwg  
 DATE: 2022-08-02 10:45:35 AM