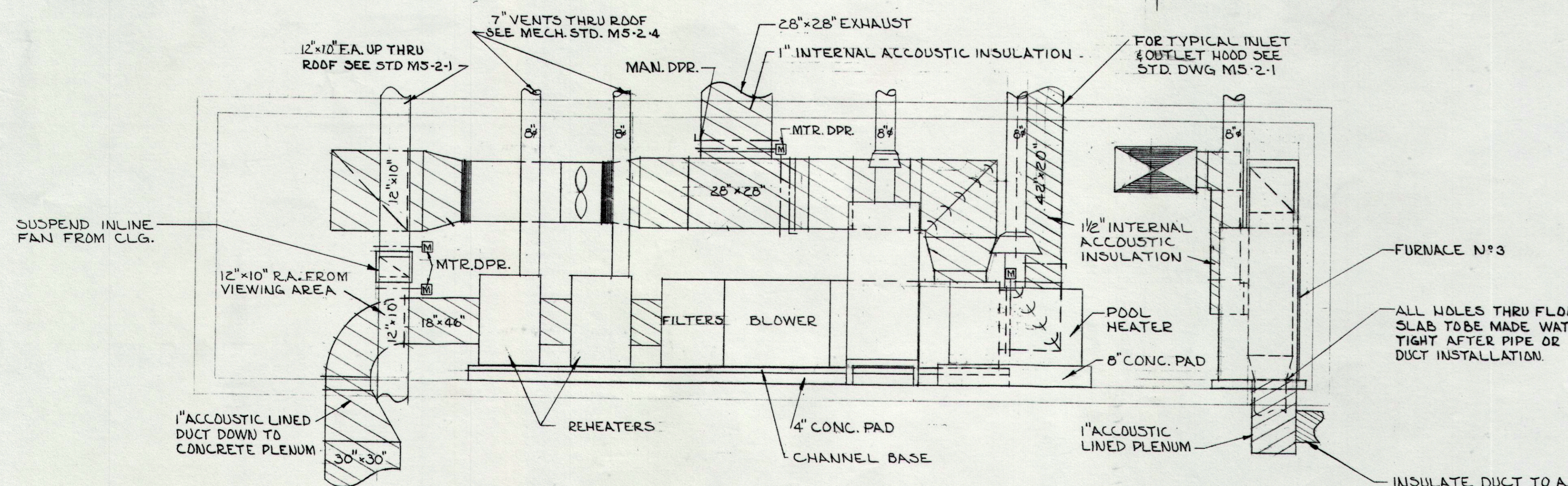
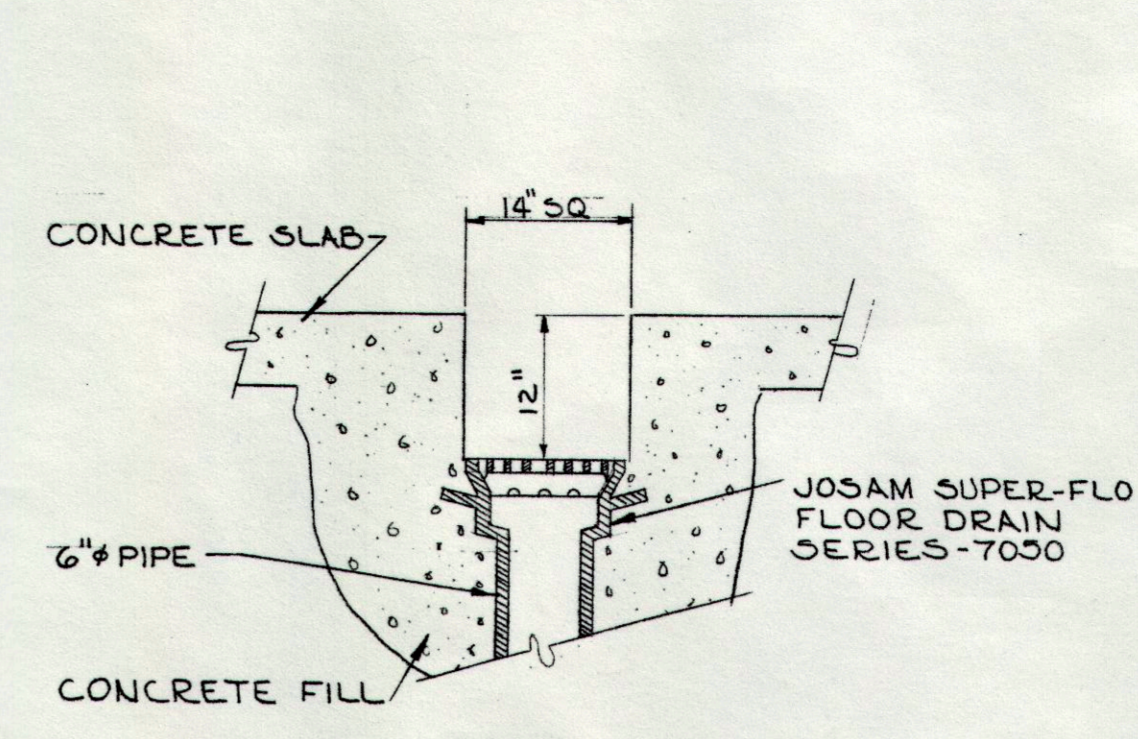


MECHANICAL ROOM PLAN
3/8" = 1'-0"

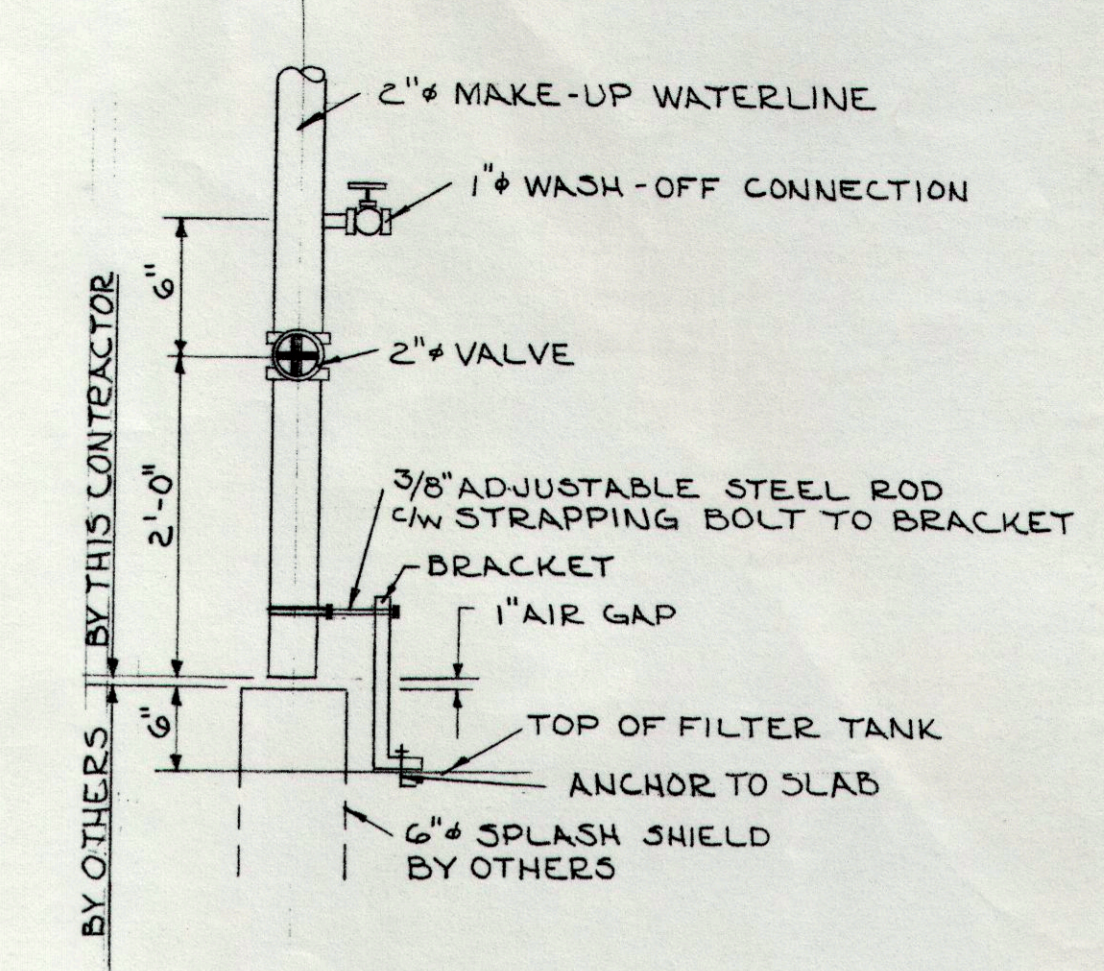


MECHANICAL ROOM SECTION
3/8" = 1'-0"

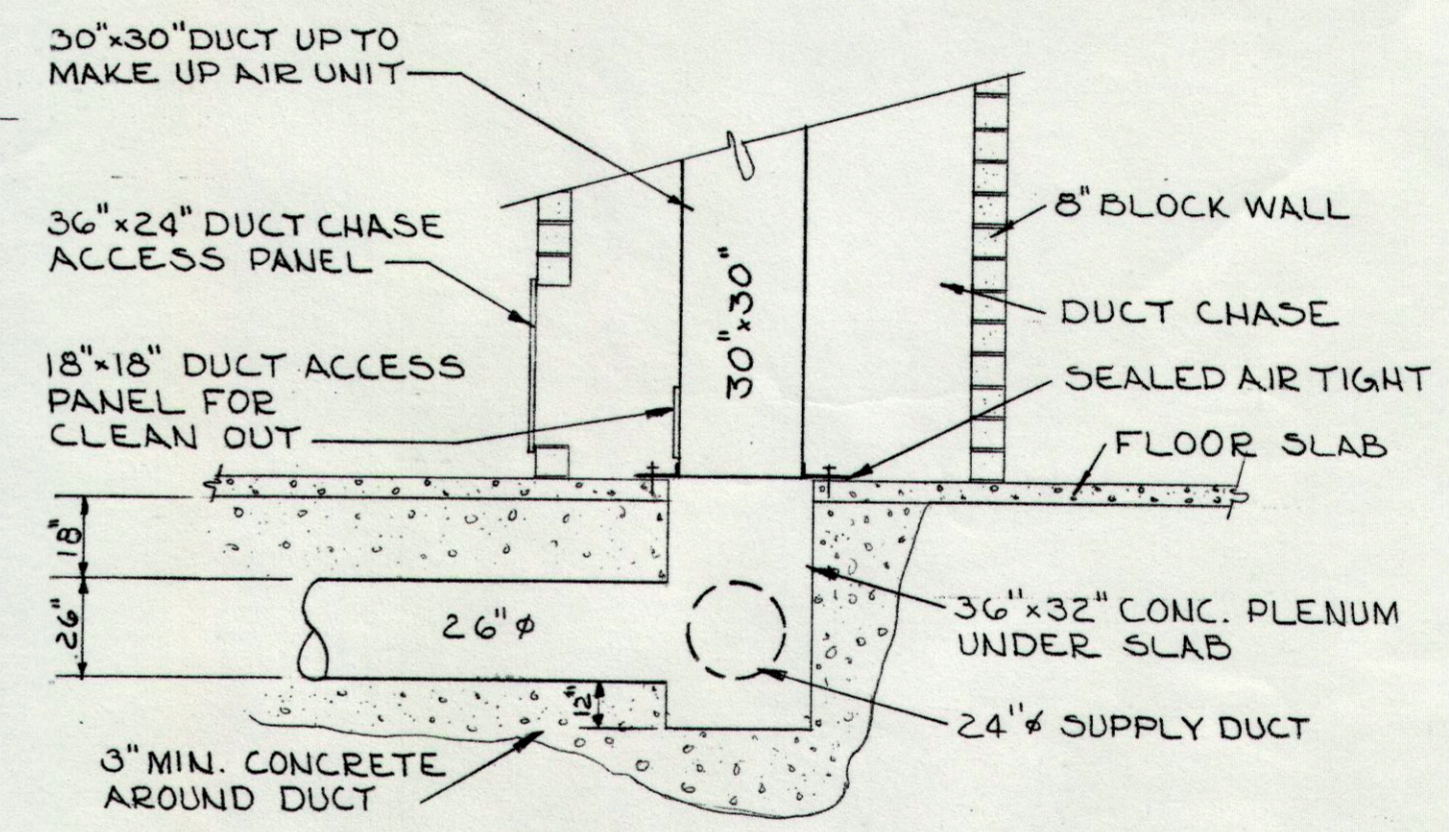
NOTE:
ALL FRESH & COMBUSTION AIR DUCT INSULATED WITH 1 1/2" INTERNAL RIGID INSULATION.
INTERNAL ACCOUSTIC INSULATION SHALL BE VAPOR SEAL RIGID FIBREGLASS BOARD.



DETAIL 2
3/4" = 1'-0"

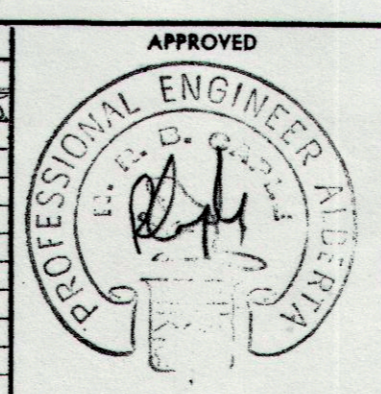


MAKE-UP WATERLINE DETAIL
N.T.S.



CONCRETE PLENUM DETAIL
1/4" = 1'-0"

ISSUE	DATE	REMARKS	NO.	REVISION	DATE	BY
1	Mar 5/75		Δ	MAKE UP AIR UNIT & RECIRC FAN F.D., PLENUM & MAKE UP WATER DET.	5/3/75	E.B.



UNDERWOOD McLELLAN & ASSOCIATES LIMITED
CONSULTING ENGINEERS - TOWN PLANNERS
BRITISH COLUMBIA • ALBERTA • SASKATCHEWAN • MANITOBA • ONTARIO

DRAWN: E.B.
CHECKED: J.D.
DESIGN: J.D.
TRACED:
SCALE: AS NOTED

CITY OF DRUMHELLER, ALBERTA
SWIMMING POOL
MECHANICAL ROOM LAYOUT

DATE: JAN/75
JOB: 2113-223-116
SHEET: 3 of 3
DRAWING: M-3
ISSUE: 1

MICROFILMED