

TOWN OF DRUMHELLER BYLAW NUMBER 14.20

BEING A BYLAW TO AMEND MUNICIPAL DEVELOPMENT PLAN BYLAW 11-08 FOR THE TOWN OF DRUMHELLER IN THE PROVINCE OF ALBERTA.

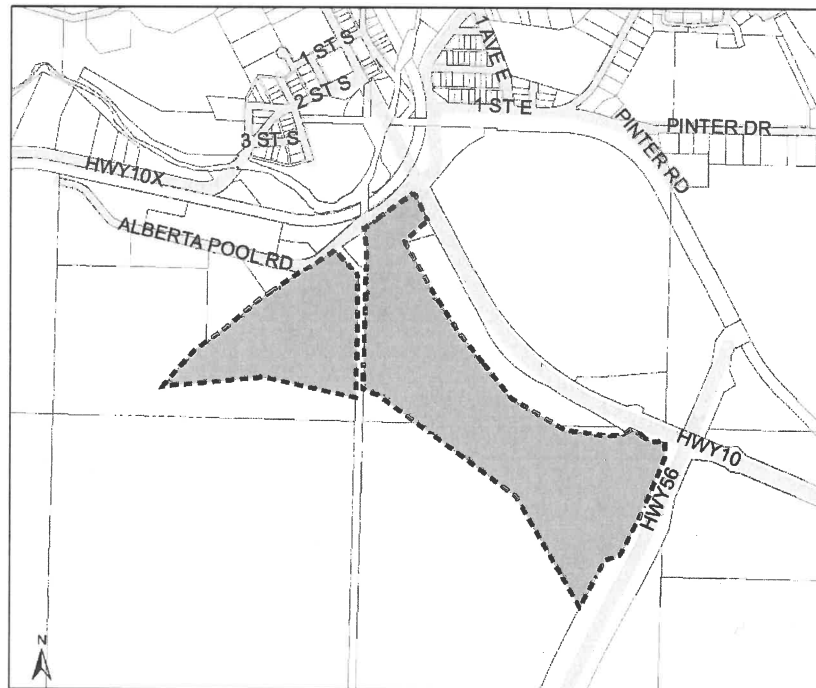
WHEREAS pursuant to the provision of Section 632 of the *Municipal Government Act*, RSA 2000, Chapter M-26, the Council of the Town of Drumheller, (hereinafter called the Council), has adopted Municipal Development Plan Bylaw 11-08;

AND WHEREAS the Council deems it desirable to amend Municipal Development Plan Bylaw 11-08; and

NOW THEREFORE the Council hereby amends Municipal Development Plan Bylaw 11-08 as follows:

On Future Land Use Map "6-Rosedale to Cambria" (Figure 2-5), change a portion of the future land use map from "Industrial Development" to "Industrial Development/Compatible Commercial Development" as shown on the plan below:

PROPOSED MUNICIPAL DEVELOPMENT PLAN AMENDMENT BYLAW 14.20



 Amendment Areas


Proposed Change From:
"Industrial Development" to "Industrial Development/
Compatible Commercial Development"

(proposed new map for MDP shown in Schedule A)

READ A FIRST TIME THIS 20th DAY OF JULY, 2020

READ A SECOND TIME THIS 04th DAY OF AUGUST, 2020.

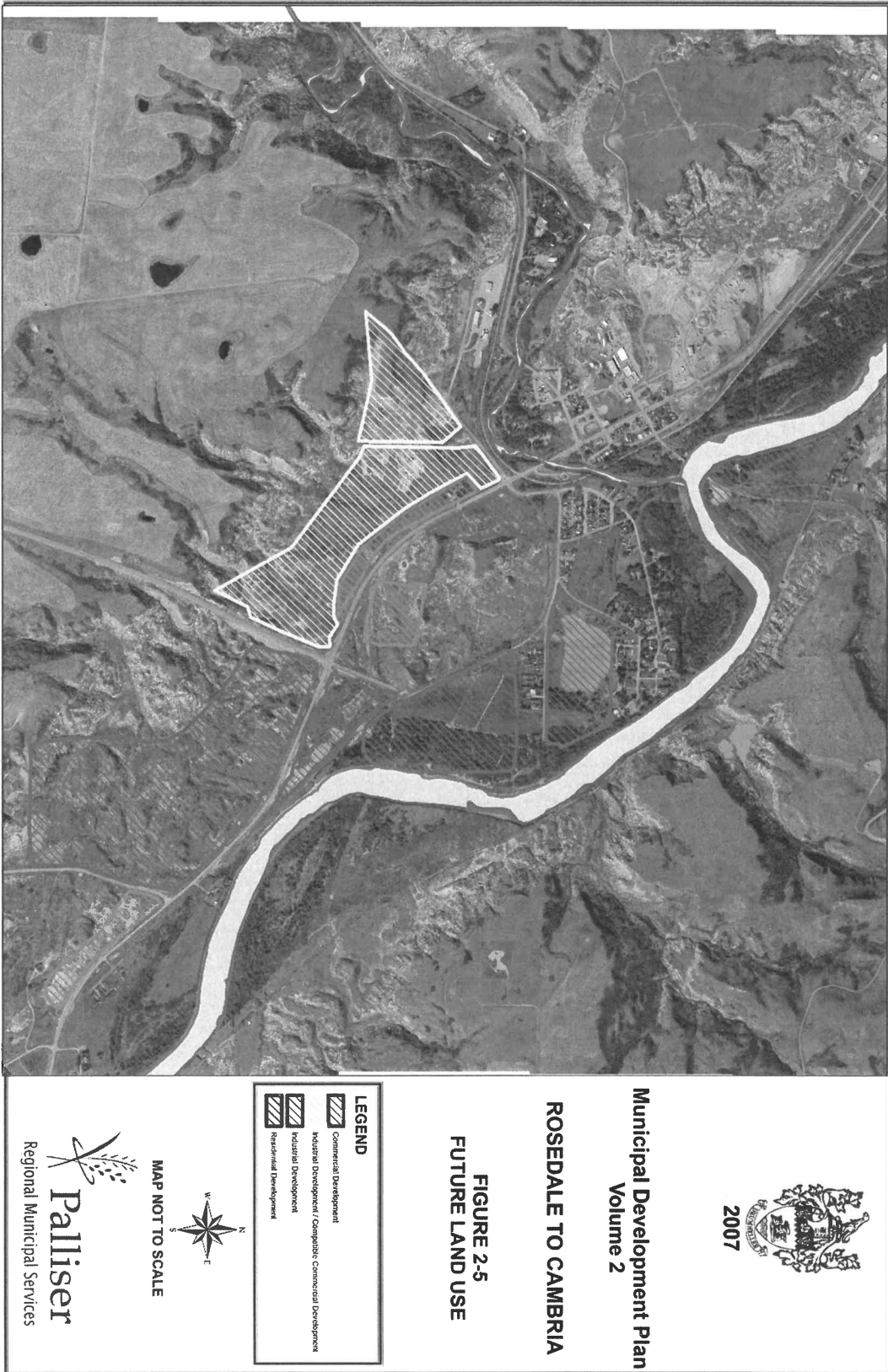
READ A THIRD TIME AND PASSED THIS 4th DAY OF AUGUST, 2020.


MAYOR


CHIEF ADMINISTRATIVE OFFICER

SCHEDULE A

Proposed map to be inserted in the Town of Drumheller Municipal Development Plan Bylaw 11-08



SCHEDULE A

Proposed map to be inserted in the Town of Drumheller Municipal Development Plan Bylaw 11-08

